

THE BRIDGE

AT THE CROSSING

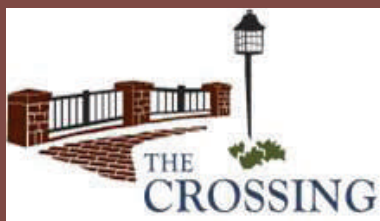


The Bridge Volume 18 September-October 2010

INSIDE

Saturday Morning Coffees	1
Ladies Day Out	1
The Crossing Condominium Book Club	1
September Area Happenings	2
Sudoku Puzzle	2
October Area Happenings	3
Word Search	3
So Many Books	4
Apple Tree Contacts	4
Wild Life At The Crossing	5
Crossing Condo-Community Committees	6
The Crossings Pond Meeting	6
Construction Corner	6
Dates to Remember	8

Visit www.appletree-homes.com for virtual tour of our models and news on the community



Saturday Morning Ladies' Coffees



September 18, 9:00 a.m.

Fall is approaching and it's time to restart the Ladies' Coffee Group on Saturdays. The first one is scheduled for **September 18, at 9:00 a.m.** Our group is called **Catch-up Coffee**. We will gather at the Clubhouse, will see friends we haven't seen for awhile and will find out what happened over the summer and what plans are in the making. Often great stories are told.

Coffee, regular and decaf, as well as tea are always provided. Goodies are provided by anyone who wants to bring something.

Upcoming Coffees are scheduled for October 16 and November 13. Mark you calendars.

By: Lorretta

Ladies Day Out



September 16, 1:00 to 3:00

The Governor's Mansion in Madison is available for touring on Thursday afternoons. We want to propose a trip there Thursday, September 16. The tours are free and are from 1:00 p.m.—3:00 p.m. (Car pool from The Crossing)

If you are interested, just contact Sharon Olson or Loretta Dichraff so we know how many people to plan for. An E-mail later in the month will be sent to interested parties with more details.

By: Lorretta

THE CROSSING CONDOMINIUM BOOK CLUB



Thursday, Sept. 16, at 7 PM

Book club will meet Thursday, Sept. 16, at 7 PM at the clubhouse. We'll discuss Anna Quindlen's Rise and Shine. All are welcome. Bring suggestions for future books.

By: Patti





SEPTEMBER AREA HAPPENINGS

Some of the local events and things to do in our area in September are listed below.

► DANE COUNTY WEDNESDAY FARMERS' MARKET WEDNESDAYS, FROM 4/21 TO 11/3, 8:30A.M. - 2P.M.

Local vendors sell their wares at this weekly Farmers' market..

Location of Event: 200 MLK Jr. Blvd
Visit: www.dcfm.org

► DANE COUNTY FARMERS MARKET SATURDAYS, FROM 4/17 TO 11/6, 6A.M. - 2P.M.

Local vendors sell their wares at this weekly Farmers' market.

Location of Event: Capitol Square
Visit: www.dcfm.org

► MAD-CITY SKI TEAM WEEKLY SHOW 9/5, 5:30P.M. - 8P.M.

Final water ski show of the season, featuring human pyramids, free-style jumping, barefooting, swivel skiing, and a ballet line.

Location of Event: Law Park
Visit: www.madcityskiteam.com

► BOLZ CONSERVATORY EXHIBIT LIFE IN THE CANOPY (OLBRICH BOTANICAL GARDEN EVENTS), 9/7 TO 1/2/2011, TIMINGS:, 10:00 A.M. - 4:00 P.M.

The lush plants on the forest floor of the Bolz Conservatory draw the attention of most visitors...But Look up! Up to 90 percent of life in the rainforest exists in the trees colorful orchids, bromeliads that provide water homes for tree frogs, birds, animals, and more. Discover the Bolz Conservatory's canopy layer and the plants and animals that call the canopy home.

Location of Event: 3330 Atwood Ave. Madison, WI 53704, Contact information: 608-246-4550
Cost of Event:, \$1.00
Visit: www.Olbrich.org

► DEAN HOUSE OPEN HOUSE (PARK EVENTS), 9/12, 2 P.M. - 4 P.M.

The Victorian-decorated farmhouse, built in 1856, is open for guided tours from 2-4 P.M. on the Second Sunday of every month. Sponsored by the Historic Blooming Grove Historical Society.

Location of Event: The Dean House, 4718 Monona Drive
Cost of Event: free
Visit: www.bloominggrovehistory.org

► ART QUILT SALE (OLBRICH BOTANICAL GARDEN EVENTS), 9/25 AND 9/26, 10 A.M. - 4 P.M.

Choose from a variety of colorful wall hangings, table runners, and decorative squares to give as gifts or brighten up your own home. All quilts made by the Thursday Quilting Friends. A portion of the proceeds benefits Olbrich Gardens.

Location of Event: 3330 Atwood Ave. Madison, WI 53704, Contact information: 608-246-4550
Visit: www.olbrich.org

► QUILTS IN BLOOM: FALL QUILT & FLOWER SHOW (OLBRICH BOTANICAL GARDEN EVENTS), 9/25, TO 10/17, 10 A.M. - 4 P.M.

View dozens of locally-crafted art quilts on display in the Atrium as part of Olbrich's Fall Quilt and Flower Show. Creative display of fall foliage and flowers are color-coordinated with unique hand-crafted quilts.

Location of Event: 3330 Atwood Ave. Madison, WI 53704, Contact information: 608-246-4550
Visit: www.Olbrich.org

► CAPITOL CITY LIGHT THE NIGHT WALK, 9/30, 5 P.M. - 9 P.M.

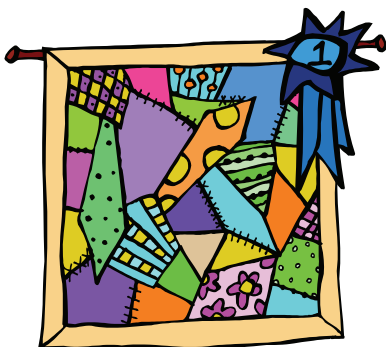
Join the Leukemia & Lymphoma Society's Light The Night walk to celebrate and commemorate lives touched by cancer. Participants walk carrying illuminated balloons - white for survivor, red in support, gold in memory of a life lost.

Visit: www.lightthenight.org

► TUNES AT MONONA TERRACE, FIRST WEDNESDAY OF THE MONTH, 9/1, 10/6, 11/3, AND 12/1, 5:30 P.M. - 07:00 P.M. MADISALSA (LATIN JAZZ & SALSA) 9/1, 05:30 P.M. - 07:00 P.M.

Kick up your heels at Monona Terrace! Tunes at Monona Terrace is a free community concert series sponsored in part by Friends of Monona Terrace. Favored by music fans and dancers alike, "Tunes" audiences enjoy menu specials at the concession kiosk, which also offers soft drinks, wine and beer. Table seating is available. A wooden dance floor is available for the enjoyment of all dancers for all of the indoor concerts.

Location of Event: **MONONA TERRACE**
Visit: <http://www.mononaterrace.com/community/all-programs>



Easy Puzzle 3,859,620,283

	5	8	1				
	9	2	6	4			7
				2	8	1	4
8		9				1	3
		5			4		
7	3				2		5
2		3	5	8			
5				7	2	8	6
				6	5	3	

OCTOBER AREA HAPPENINGS

Some of the local events and things to do in our area in July are listed below.

➤ **DANE COUNTY FARMERS MARKET SATURDAYS, FROM 4/17 TO 11/6, 6 A.M. – 2 P.M.**

Local vendors sell their wares at this weekly Farmers' market.

Location of Event: Capitol Square

Visit: www.dcfm.org

➤ **DANE COUNTY FIRE CHIEF'S ASSOCIATION FIRE TRUCK PARADE, SUNDAY 10/3, 1 P.M. - 3 P.M.**

This popular event is held each year to mark the beginning of Fire Prevention Week in Dane County. The parade includes nearly 40 fire trucks from many of the Dane County Fire Departments. The fire trucks will park around the Square and be on display until 3:00 P.M.. Children will be able to sit in the vehicles and meet the firefighters. Location of Event: The Parade will start at the intersection of State Street and Lake Street and proceed up State Street to the Capitol Square.

Visit: <http://www.danecountyfirereport.com/parade.htm>

➤ **DANE COUNTY WEDNESDAY FARMERS' MARKET WEDNESDAYS, FROM 4/21 TO 11/3, 8:30 A.M. – 2:00 P.M.**

Local vendors sell their wares at this weekly Farmers' market..

Location of Event: 200 MLK Jr. Blvd

Visit: www.dcfm.org

➤ **TUNES AT MONONA TERRACE, FIRST WEDNESDAY OF THE MONTH, 10/6, AND 11/3, 5:30 P.M. - 7:00 P.M.**

PEACHEY BAND (BIG BAND, POLKA, LATIN, WALTZ) 10/6

THE RELICS (50s & 60s ROCK 'N ROLL) 11/3

Kick up your heels at Monona Terrace! Tunes at Monona Terrace is a free community concert series sponsored in part by Friends of Monona Terrace. Favored by music fans and dancers alike, "Tunes" audiences enjoy menu specials at the concession kiosk, which also offers soft drinks, wine and beer. Table seating is available. A wooden dance floor is available for the enjoyment of all dancers for all of the indoor concerts.

Location of Event: **MONONA TERRACE**

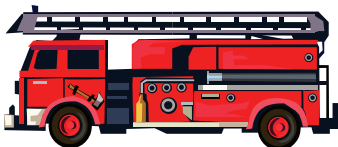
Visit: <http://www.mononaterrace.com/community/all-programs>

➤ **BRIDGE LAKE POINT WAUNONA PIG ROAST, 10/02, 5 P.M. - 8 P.M.**

Pig Roast to benefit the Bridge Lake Point Waunona Neighborhood Center. Tickets sold in advance on-line at blwcenter.org or by mail.

Location of Event: Beach, 2802 Waunona Way

Visit: www.blwcenter.org



➤ **DEAN HOUSE OPEN HOUSE, 10/10, 2 P.M. – 4 P.M.**

The Victorian-decorated farmhouse, built in 1856, is open for guided tours from 2-4 P.M. on the Second Sunday of every month. Sponsored by the Historic Blooming Grove Historical Society.

Location of Event: The Dean House, 4718 Monona Drive

Cost of Event: free

Visit: www.bloominggrovehistory.org

➤ **FALL QUILT AND FLOWER SHOW PLANT SALE (OLBRICH BOTANICAL GARDEN EVENTS), 10/18, 12 P.M. - WHILE SUPPLIES LAST**

Select plants from Olbrich's Fall Quilt and Flower Show will be on sale. Varieties may include mums, dusty miller, and coleus. Plant them in the garden or containers to add fall color or use them indoors as centerpieces.

Location of Event: 3330 Atwood Ave. Madison, WI 53704, Contact information: 608-246-4550

Visit: www.olbrich.org

HALLOWEEN AT THE ZOO SUNDAY, 10/24, 7 P.M.

Halloween at the Zoo is a celebration for the entire community that includes free Trick-or-Treating, a Fun House, and music

Location of Event: Henry Vilas Zoo

Visit: <http://www.vilaszoo.org/events/index.php>

➤ **RICHIE'S HOUSE OF JAZZ, FEATURING RICHIE COLE & FIVE BY DESIGN WEDNESDAY, 10/27, 7 P.M.**

Treat yourself to an unforgettable evening with vocal quintet, Five By Design in concert with very special guest...alto sax legend Richie Cole. Sponsored by the Wisconsin Music Educators Association and Monona Terrace, this concert marks the beginning of the annual Wisconsin State Music Conference and is open to the public. As part of their Madison appearance, Five By Design and Richie Cole will be leading seminars for music teachers at the conference.

Location of Event: **MADISON BALLROOM, MONONA TERRACE**

Visit: <http://www.mononaterrace.com/community/all-programs>

HALLOWEEN WORD SEARCH (DIFFICULT)

H	M	F	T	C	D	O	S	Z	T	E	D	S
L	A	E	L	A	O	C	T	O	A	P	R	N
Y	U	L	E	O	R	F	M	M	Y	I	A	I
L	S	D	L	E	W	B	F	B	I	C	Y	A
L	N	O	A	O	S	E	L	I	W	E	E	R
U	D	M	U	T	W	C	R	E	N	R	V	B
K	A	A	O	T	A	E	A	E	A	I	A	N
S	T	N	E	E	P	L	E	N	W	I	R	E
A	E	R	I	P	M	A	V	N	D	I	G	V
H	A	U	N	T	E	D	F	S	H	L	E	A
T	P	Y	R	C	O	S	T	U	M	E	E	R
O	C	T	O	B	E	R	W	I	T	C	H	E
T	H	U	N	D	E	R	A	D	N	N	T	C

COFFIN	HAUNTED	HALLOWEEN	OCTOBER	ZOMBIE
CANDLE	UNDEAD	WEREWOLF	COSTUME	RECIPE
VAMPIRE	THUNDER	GRAVEYARD	SCREAM	BRAINS
CRYPT	WITCH	TOMBSTONE	SKULL	RAVEN

SO MANY BOOKS...

The book column for this issue is going to be a hodgepodge, miscellany, conglomeration, variety, medley, assortment of several books noteworthy at this time or just good, informational, educational and social/cultural reads.

The first of these is *The Man Who Made Lists: love, death, madness, and the creation of Roget's Thesaurus*, by Joshua Kendall, c2008, and the reason for the start of the above sentence. That collection of similar and descriptive words is not original with me but is the manner in which Mr. Kendall starts the Preface of his book using 22 different words in Latin, Greek, English, of course, and probably other languages. I started listening to the book on my return to Lacey Road from the Oregon Library. By the time I arrived home I was hooked and again enchanted with the spoken and written word. The following is from the synopsis of the book on its cover: "From a young age, Peter Mark Roget longed for order in his chaotic world. His father's premature death and the mental illness of his mother and sister threatened to plunge him into the darkness of his own madness. And so, at the age of eight, he started making lists, . . . and brought life to the book that would become synonymous with synonyms." Early in the book, the author writes, ". . . he taught the English how to speak" and described Roget as, "In the days before every laptop came equipped with a thesaurus, Roget was already an Icon." With many more phrases like that - too many to record here - this is a book I will buy for my collection because I want to highlight and asterisk pages.

The next books to talk about are two new biographies. The first is entitled *I Am Scout: a biography of Harper Lee*, by Charles J. Shields. Ms. Lee's *To Kill a Mockingbird*, is this year celebrating 50 years in publication. Shields discusses why Ms. Lee never published another book, and why she left the South, writing this book in New York. It also tells of her life long acquaintanceship with and informal writing/interviewing mentorship of Truman Capote. She stills lives in the small southern town of Monroeville, AL which is the setting for Maycomb, the town of *To Kill a Mockingbird*. A striking comment Shields made is that he believes that she has written another book which will be published after her death, not wanting herself or her hometown to have to endure the onslaught of journalist, writers, fans, and other tourists that will gather after its publication. Interesting.

The second biography is that of Pearl S. Buck by Hillary Spurling entitled *Pearl Buck in China: Journey to the Good Earth*. Five of Ms. Buck's eleven books were international best sellers, and her second novel, *The Good Earth*, upon its publication in 1931 quickly became a world wide success. It won the Pulitzer Prize in 1932, then other awards, culminating in the Nobel Prize for Literature in 1938. She went to China as an infant with her missionary parents and did not return to the United States until 1934 in her early forties. She spoke Chinese before English and wrote in both languages about the Chinese; Chinese peasant and family sagas of uncomplicated plot, realistic and objective presentations told in simple, biblical-sounding language. This during the great depression, her stories told of trial and tribulation, of flood and drought, but then the renewal of soil and season, of the fruit of the earth and the womb, the facts of birth, love, laughter, sorrow, death, perseverance and eventual reward. Her stories were set in a foreign land but spoke of all men.

Finally, I want to talk about the amazing true story described in the book *The Immortal Live of Henrietta Lacks*, author Rebecca Skloot. Ms. Skloot is an award-winning science writer who teaches creative non-fiction writing at the University of Memphis. I mention this because the book is so readable and moving, and is best described, briefly, by two sources: another author, Susan Orlean who says: "Skloot's book is wonderful - deeply felt, gracefully written, sharply reported", and by a review in *Booklist*: "Writing with a novelist's artistry, a biologist's expertise, and the zeal of an investigative reporter, Skloot tells a truly astonishing story of racism and poverty, science and conscience, spirituality and family driven by a galvanizing inquiry into the sanctity of the body and the very nature of the life force". This book is so compelling and so well written it just pushes you through, some times with your mouth open in astonishment, your brain yelling, "They can't do that". It is written with "rich detail, wit, and humanity". It may be about science, medicine, research and is non-fiction to boot, but it is a compelling read.

Let me know what you are reading and would like to share with others. That is what this column is for.

SUDUKO ANSWERS

4	5	8	1	3	7	9	2	6
1	9	2	6	4	5	3	8	7
3	7	6	9	2	8	1	5	4
8	2	9	7	5	4	6	1	3
6	1	5	2	9	3	4	7	2
7	3	4	8	6	1	2	9	5
2	6	3	5	8	9	7	4	1
5	4	1	3	7	2	8	6	2
9	8	7	4	1	6	5	3	9

APPLE TREE CONTACTS

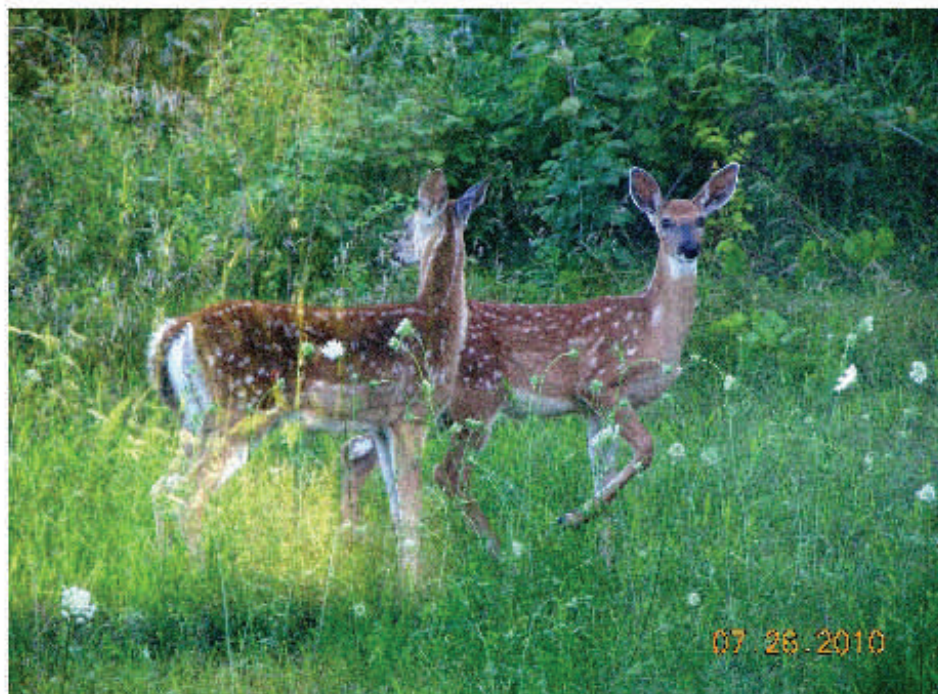
NAME	TITLE	PHONE #	CELL	EMAIL
Scott Berger	Vice President	(608) 237-1808	(608) 517-1738	scott@appletree-homes.com
Cyndy DePrimo	Admin. Assistant	(608) 237-1808		cyndy@appletree-homes.com
Heather Willcox	Sales Consultant	(608) 237-1808	(608) 444-6659	heather@appletree-homes.com
Jason Robertson	Ass. Construction Superintendent		(608) 513-3545	jasonr@appletree-homes.com
Larry Dykstra	Quality Assistant		(608) 513-6308	larry@appletree-homes.com

WILD LIFE AT THE CROSSING

Hey look! A 2 headed dear!



Oops! Guess not after another look.



The 2 headed deer is residing in the woods next to 51 Harvest Way.

Photos by: James Marcelle

Crossing Condo-Community Committees Formed in July 2010

Buildings and Roads: Walter Heinold, Robert Lee, Jim Varcelle

Clubhouse and Pool: Janet Callear, Sue Carter, Jeannie DeWalt, Dale Kleven, Michell Kleven, Rama Ravi

Grounds: Janet Adams, Sharon Olson, Lynda Rothermel, Mary Willis, Lynne Yonker

Vision Statement: Paul Ginsburg, Loretta Dichraff, Irvin Ehrlich, Dale Kleven, Michell Kleven

A Program and Social committee is being formed and looking for volunteers (four people have already volunteered but more could be used). This group may eventually need to be two separate committees.

By: Lorretta Dichraff

CONSTRUCTION CORNER Pardon Our Dust

As you have no doubt noticed, there has been a flurry of construction activity going on within the community lately. Building #14 and the first basement homes have been under construction. With three of these four homes having offers and closing in September, we plan to start construction on Building #15 next week (weather and topsoil pile permitting). With the recent closing in August and the three scheduled closings in September, by the end of the month we will have closed on forty-four (44) of the sixty-two (62) homes in the community. After Building #15, the only remaining construction in Phase will be Building #17 (quadraplex with basements), Building #12 (duplex with or without basements depending upon sales demand) and a number of models and “white-box” homes. At this time, we anticipate completing Phase I by August of 2011. The decision to begin a Phase II has not yet been made.

By: Scott Berger

The Crossing Ponds Meeting September 15, 6:15 p.m.

On September 15, Rick Eilerson; Environmental Engineer, City of Fitchburg, and Steve Banovetz; Senior Scientist with NRC Restorations, LLC, will make a presentation to The Crossing residents on the ponds and rain gardens. The meeting will be in the Clubhouse at 6:15 p.m.

Rick and Steve will provide some history on the development of the regional retention ponds and who shared in the costs. The ponds are on our property and the City of Fitchburg will be turning over their maintenance to the condo association toward the end of 2010. We will be responsible for care and maintenance of the ponds and for the first time will need to build these costs into our annual budget.

An incentive to performing proper maintenance is that The Crossing is potentially eligible for a reduction on our storm water utility bill of up to 50% if the ponds and rain gardens are maintained and function properly.

Be prepared to ask questions.

By: Lorretta Dichraff

Dates to Remember

September 15—Crossing Ponds Meeting, 6:15 p.m. (See article about this meeting above)

September 21—Next Board Meeting, time to be announced later

September 23—Capital Reserve Study Presentation, time to be announced later

October 4—Condo Community Annual Meeting, time to be announced later

By: Lorretta Dichraff

Landscape Maintenance Weeding Policy

As The Crossing community has grown, many of its residents have begun to take an increasingly more active role in its day-to-day operations. Over the past few months, many homeowner committees have formed to evaluate the various aspects of the community (e.g., landscaping, Clubhouse and Pool, etc.), develop recommendations and plans of action and in some cases implement their recommendations through hands-on action. For example, earlier this year a number of homeowners devoted quite a bit of their time to planting new flowers, bushes and trees around the Clubhouse and Monument Sign. These homeowners had both the time and desire to get a little dirty and helped beautify their community. In the process, they also saved the community a fair amount of money.

As with all condominium community, monthly condominium dues are of great interest and concern. As you might expect, all folks are in agreement that controlling monthly dues is an important objective. Controlling dues means controlling community expenses. For example, landscape maintenance is a relatively large line item in the community budget. Landscape maintenance includes, but is not limited to grass mowing, lawn fertilizing, pruning, plant replacements and weed control. Weeding in the community has recently been a topic of great interest. Initially, it appeared that the community was faced with one of two options 1) Hire Maple Leaf to weed the community at \$35 per hour or 2) use community volunteers to weed the community. As you might expect, there was no consensus as to the best approach. In fact, both ends of the spectrum of opinion are well represented. Some folks expect a full “carefree lifestyle” and would be willing to increase monthly dues to ensure this. These folks have neither the time nor desire to pull weeds and in some instance are not physically able to perform this activity. Alternatively, there are some folks that are willing and able to take an active role and would like to pursue “self-weeding” in an effort to control costs. However, it appears that a third option is available. This option would be a combination of the other two and may serve to appease everyone. Maple Leaf charges by the hour while here weeding. In addition, they can only pull weeds that exist. Should some of homeowners choose to devote some of their time to pulling weeds, this would only serve to reduce Maple Leaf’s time onsite and help control costs. Under this option, no homeowners are being asked nor are they expected to pull weeds. However, those homeowners wishing to provide assistance in community weed control are more than welcome to do so. Maple Leaf will be asked to come out twice per month to weed the community. This option has been selected by the Association’s board, though not unanimously. Tom Dichraff felt that self weeding around our own units was a responsibility that was easily accomplished by most owner and that there were alternatives available for those unable to do it on their own.